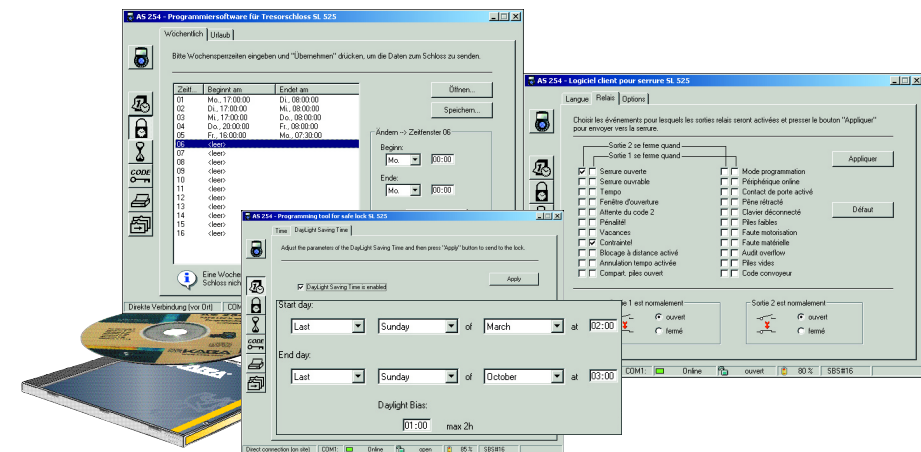


SL 525 or SL 523 –
The Choice is Yours.

Elegant design.

Models SL 523 and SL 525 are available in two housing colours: black and light grey.

For visual distinction, the control keys of the SL 523 are yellow and those of the SL 525 are blue.



Audit Trail.

The lock stores every activity and attaches a Time and Date Stamp. The User's ID, for example, is recorded every time the lock is opened, deterring internal theft.

The Audit Trail is downloaded to the Computer and can be stored as a file or printed.

	PROGNAME								
400	OUTPUT 2	ACCEPTED							14.13
401	LOCK	OPEN	FRI	MAY-16-03	11.01				14.13
402	LOCK	CLOSING	FRI	MAY-16-03	11.01				14.13
403	OPENABLE	END	THU	MAY-15-03	20.00				14.13
404	OPENABLE	BEGINNING	THU	MAY-15-03	10.00				14.13
405	OUTPUT 2	OPEN	WED	MAY-14-03	11.21				14.13
406	OUTPUT 2	CLOSED	WED	MAY-14-03	11.21				14.13
407	OUTPUT 2	OPEN	WED	MAY-14-03	11.21				14.13
408	OUTPUT 2	OPEN	WED	MAY-14-03	11.21				14.13
409	OPENABLE	BEGINNING	WED	MAY-14-03	11.11				14.13
410	PROG. MODE	END	WED	MAY-14-03	11.11				14.13
411	MASTER	PROG. MODE	WED	MAY-14-03	11.11				14.13
412	ACCEPTED	END	WED	MAY-14-03	11.11				14.13
413	OPENABLE	BEGINNING	WED	MAY-14-03	11.11				14.13
414	MASTER	PROG. MODE	WED	MAY-14-03	11.11				14.13
415	MASTER	AUDIT	WED	MAY-14-03	11.11				14.13
416	MASTER	PROG. MODE	WED	MAY-14-03	11.11				14.13
417	OPENABLE	BEGINNING	WED	MAY-14-03	11.11				14.13
418	MASTER	PROG. MODE	WED	MAY-14-03	11.11				14.13
419	MASTER	END	WED	MAY-14-03	11.11				14.13
420	OPENABLE	BEGINNING	WED	MAY-14-03	11.01				14.13
421	MASTER	PROG. MODE	WED	MAY-14-03	11.01				14.13
422	MASTER	END	WED	MAY-14-03	11.01				14.13
423	OPENABLE	BEGINNING	WED	MAY-14-03	11.01				14.13
424	MASTER	PROG. MODE	WED	MAY-14-03	11.01				14.13
425	OUTPUT 2	CLOSED	WED	MAY-14-03	11.01				14.13
426	LOCK	OPEN	WED	MAY-14-03	11.01				14.13
427	LOCK	CLOSED	WED	MAY-14-03	11.01				14.13
428	OPENABLE	END	WED	MAY-14-03	11.01				14.13
429	OUTPUT 2	OPEN	WED	MAY-14-03	11.01				14.13



Other Components of Kaba Total Access.



**Paxos® compact –
Redundant high security
locking technology of its finest.**

Paxos compact, our high security electronic lock, offers a new dimension in security. The lock continually self diagnoses itself and reports to the user via the LCD screen. It has been statistically calculated that the system will operate for up to 15 million hours before a total failure. With the lock-by-wire technology adapted from the aircraft industry, all data is transmitted by wire to the two independent security electronics in the lock casing. These drive a motor bolt via two motors, thereby releasing the door bolt to open the safe or vault door. Strongroom equipment can be upgraded with ease.



**Cencon™ 2000 –
The world's leading ATM
locking system.**

The Kaba Mas Cencon System 2000 offers access control through the use of a computer-generated, one time combination (O.T.C.™) and 'SmartKey'™, that is required with every lock opening and closure. Cencon records the lock activity for up to 478 events, and permits easy downloading of the information via the 'SmartKey' for generating reports. Cencon software allows you to control thousands of containers with no special wiring



**Code-Combi B –
Intelligent combination of
electronics and mechanics.**

This keypad operated electronic lock with mechanical key override offers a level of operational reliability comparable to that of mechanical locking systems. As well as code opening, the lock also allows mechanical override opening using a double-bit key. There is a choice between high-quality aluminium and a modern, plastic-design input unit. The user-friendly lock features power saving permanent magnet technology. Under normal circumstances, it is possible to perform approximately 30 000 opening cycles without changing the battery.



SL 525 and SL 523 – The ‘All-in-One’ Motorized Combination Locks.



AR : Kaba Australia Pty Ltd. Unit 3, 42-44 Redfern Street, AU-Wetherill Park NSW 2164, +61 2 8787 4777
BR : Kaba do Brasil Ltda R. Eng. Jorge Oliva 11, BR-São Paulo, SP04362-060, +55 11 5677 7177, www.kabadoBrasil.com.br
DE : Kaba Maurer GmbH Frankenstraße 8-12, DE-42579 Heiligenhaus, +49 2056 5960, www.kaba-maurer.de
ES : Iberkaba S.A. /C/ María Tubau 4, ES-28050 Madrid, +34 902 22 41 11, www.iberkaba.com
FR : Silca SA 94 bd Richard Lenoir, FR-75011 Paris, +33 1 43 14 30 10, mhendrickx@silca.fr
GB : Kaba (UK) Ltd Lower Moor Way, GB-Twerton, Devon EX16 6SS, +44 1884 258464, www.kaba.co.uk
HK : Kaba Limited Unit 4, 4/7 Kerry Cargo Centre, 55 Wing Kai Road, HK-Kwai Chung NT, +852 2375 6110
JP : Nihon Kaba K.K. 1-18-2 Hakusan, Midori-ku, JP-Yokohama 226-0006, +81 45 931 8900, www.kaba.co.jp
SG : Kaba Security Pte Ltd. Bk.2034-Henderson Rd, #07-03 Henderson Ind. Park, Singapore 159547, +65 62751211
US : Kaba Mas Corp. 749 W. Short Street, US-Luxington, JX 40508, +1 859 253 4744, www.kaba-mas.com



SL 525 and SL 523 – The ‘All-in-One’ Motorized Combination Locks.

‘All-in-One’.

The electronic safe locks SL 525 and SL523 have been developed on the basis of the

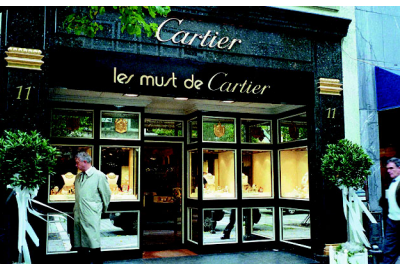


‘All-in-One’ concept. This means that they already integrate a range of functions that would normally require accessories and extensions. State-of-the-art HLI microelectronics allow a range of functions that are unparalleled. Motorised Bolt Lock, Delay and Time Lock, Audit Trail with time and date stamp, Multi-Stage Code Hierarchy, Alarm Signal Connection, easy programming via LCD Screen or Optional Software. These are some of the functions included in this ‘All-in-One’ package.



A safe lock for all specifications.

The SL 525 and the SL 523 are designed particularly for applications in the moderate to high security sector. This particularly relates to the Financial and the Retail Industries or wherever else time lock functions, organisational flexibility and an improved level of monitoring and traceability are required. The standard footprint allows the lock to replace traditional mechanical safe locks, and/or time locks. With diverse functions and the computer-programmable inputs and outputs, this allows each installed system to



be programmed to your exact specification. This unique flexibility, in combination with extremely easy installation and self-explanatory operation, means that the range of applications is virtually unlimited.



Convenient operation.

Whilst the installer will benefit, from the easy and fast installation, security officers or operators consider other attributes to be important : security, reliability, and approval by International certification bodies. The easy-read liquid-crystal display (LCD) is a major advantage, providing self-explanatory operations in various languages. Users are prompted by self-explanatory function symbols through the clearly structured menu. The relevant code holder has access only to the functions enabled for his or her authorisation level. Operation is very simple using the keypad or the optional Windows® -based software.

Secure and Reliable in all Sectors.

justification. Everyone has his or her own code. The boss always knows who has done what with the safe and when. If my shift is over, I can’t open the safe’.

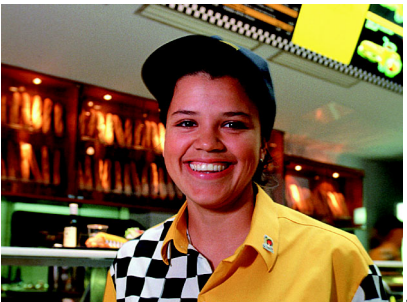
Application : Jewellers’ shops.

‘My vocation is making specific customer wishes come true. Discretion and reliability are very important. For me, it is important that my security facilities are reliable and are easy to operate. It would be unimaginable if I could not open the lock on my safe in the morning.... Besides the elegant design of



Application : Fast-food restaurants.

‘We have to do everything really fast. Customers don’t want to hang around and that’s why they come to us. I haven’t got time to



bother about complicated technology. Enter the code, the safe opens, put the takings in the safe, close the door and the safe is closed. It’s as simple as that. And, in the case of irregularities, no one is suspected without

Application : CIT (Cash-In-Transit).

‘We work in a quite special business area. Everything focuses on security, reliability and good planning. Fast response to customer requirements is possible only if the

infrastructure used, e.g. the locking system used in ATMs, also allows this. Our cash transport operatives are granted immediate access with their



code without having to wait. Optionally, immediate access can be granted, e.g. if the ATM is empty’.

Application : The banking sector.

‘As the Security Officer of a major bank with several hundred branches, I want to rely only on safe locks which are certified by independent security institutions. We can’t afford weak links in the security chain. Of course, quality, reliability, procurement



costs and maintenance costs also play a role which should not be underestimated’.

SL 525 or SL 523 – Features.

General Features.

- ✓ Motorised lock with automatic locking.
- ✓ Adaptable bolt function : dead bolt / spring bolt.*
- ✓ Fast retrofitting, standard footprint.
- ✓ Inputs/outputs integrated in lock unit for e.g. alarm connection and remote supervision etc.
- ✓ High-quality, rugged metal input unit with elegant design.
- ✓ Large, easy read liquid-crystal display (LCD).
- ✓ Long battery service life which is above-average.
- ✓ Battery compartment accessible from the outside.
- ✓ Multi-language display.
- ✓ Non-resettable opening counter.
- ✓ Adjustable beeper volume.**
- ✓ Audit trail.
- ✓ Approvals : VdS Class 2, CEN prEN 1300 Level B.

Code lock.

- ✓ 4 hierarchy levels : Master, Manager, User and Courier.
- ✓ Dual mode.
- ✓ Code denial.
- ✓ Wrong trial penalty.
- ✓ Duress code entry can be enabled / disabled.
- ✓ Selectable code format (ID+PIN or PIN+ID).**

Time lock.

- ✓ RTC (real time clock) with weekday and leap year recognition.
- ✓ Selectable time format (AM/PM or 24 hours).
- ✓ Weekly locking programmes.
- ✓ Immediate locking (valid from now until end of next weekly locking period).
- ✓ Holiday periods.
- ✓ Yearly repeating periods.
- ✓ Fully automatic DLST (daylight saving time, summer/winter time) changeover.**

Delay.

- ✓ Opening delay with confirmation window.
- ✓ Duress opening delay with confirmation window.**
- ✓ Digital input to bypass opening delays.

Control inputs.

- ✓ Close command.
- ✓ Delay bypass.
- ✓ Remote disabling.
- ✓ Controlled disabling.**

Digital outputs.

- ✓ Duress code.
- ✓ Lock open.
- ✓ Invertible output polarity.**
- ✓ Individual output adaption.**

* non-VdS

** SL 525 with programming SW